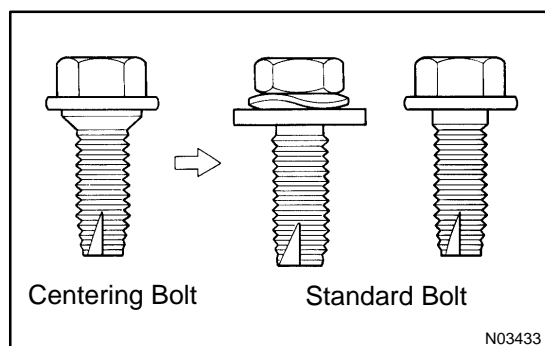


ADJUSTMENT

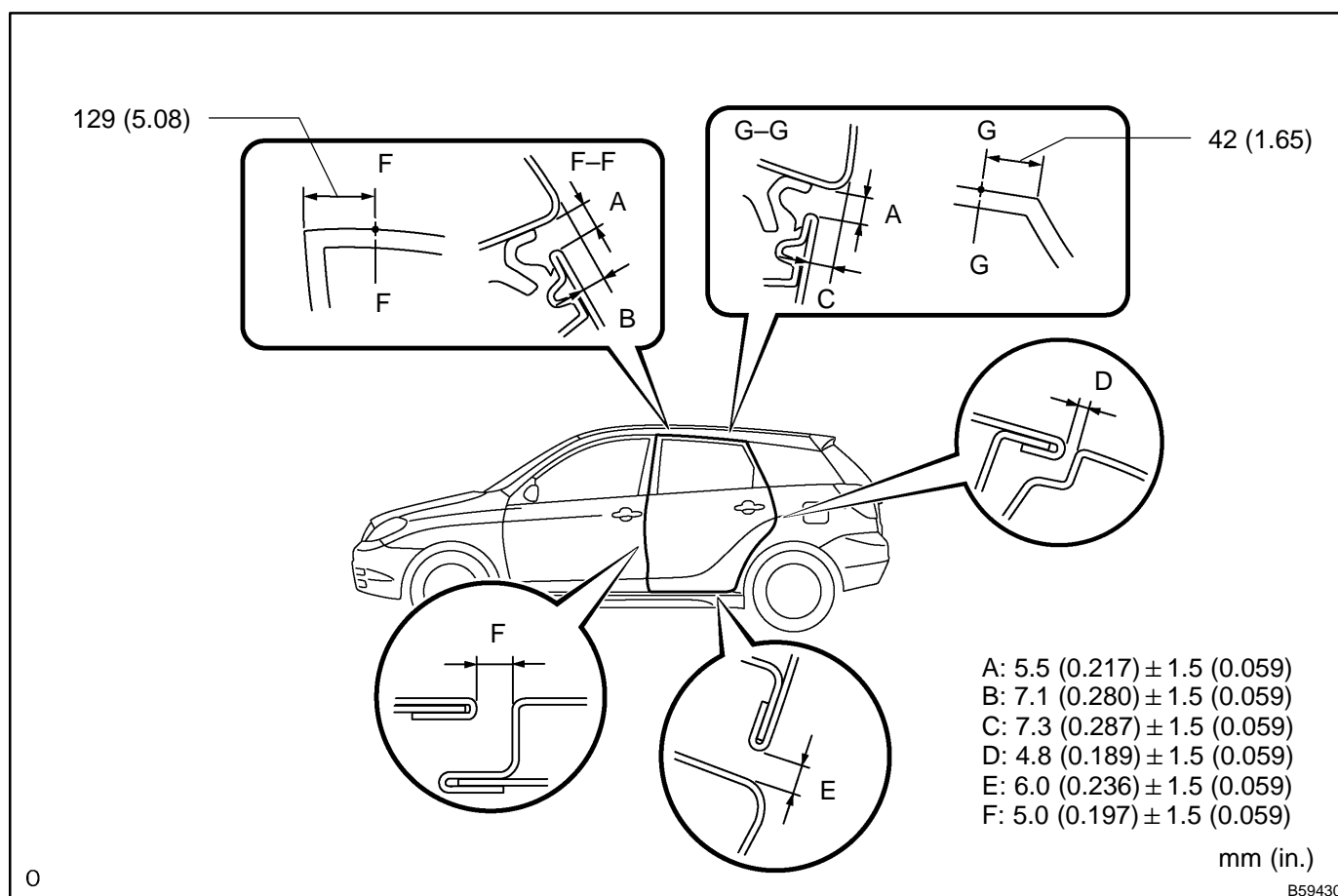
HINT:

- In the RH side, work in the same procedure as in the LH side.
- Since the centering bolt is used as a door side hinge bolt, the door hinge cannot be adjusted with it on. Substitute the bolt with washer for the centering bolt.



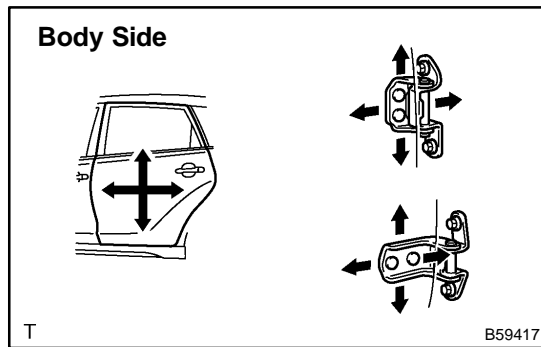
1. INSPECT REAR DOOR PANEL SUB-ASSY LH

- (a) Check that the clearance is within the standard value.



2. REMOVE FRONT DOOR SCUFF PLATE LH (See page 76-17)
3. REMOVE REAR DOOR SCUFF PLATE LH (See page 76-17)
4. REMOVE FRONT DOOR WEATHERSTRIP LH (See page 75-5)
5. REMOVE REAR DOOR WEATHERSTRIP LH (See page 75-18)
6. REMOVE CENTER PILLAR GARNISH LOWER LH (See page 76-17)

2003 COROLLA MATRIX (RM940U)

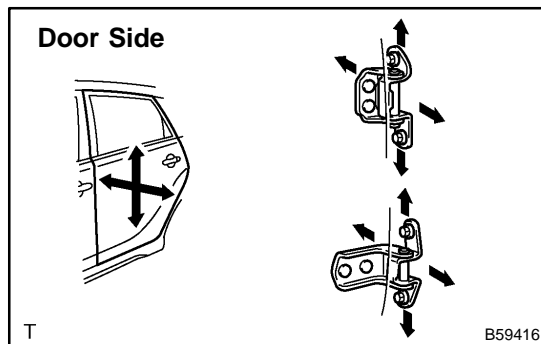


7. ADJUST REAR DOOR PANEL SUB-ASSY LH

(a) Adjust the door in the forward/rearward and the vertical direction.

(1) Adjust the door by loosening the body side hinge nuts.

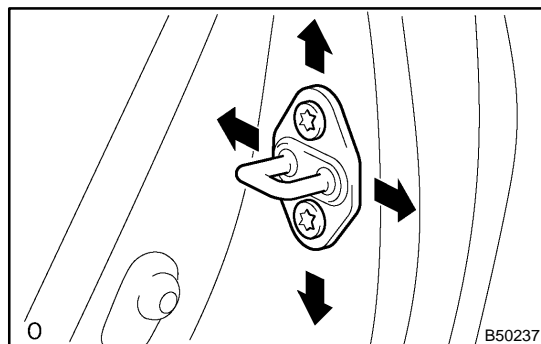
Torque: 26 N·m (265 kgf·cm, 19 ft·lbf)



(b) Adjust the door in the inner/outer and the vertical direction.

(1) Adjust the door by loosening the door side hinge bolts.

Torque: 26 N·m (265 kgf·cm, 19 ft·lbf)



(c) Adjust the striker position by slightly loosening the striker mounting screws, and hitting the striker with a plastic-faced hammer.

(d) Tighten the striker mounting screws again.

Torque: 23 N·m (235 kgf·cm, 17 ft·lbf)