

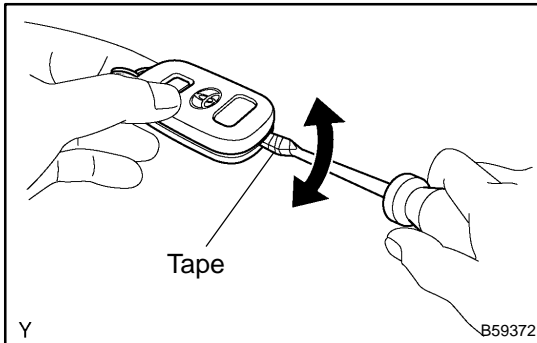
TRANSMITTER BATTERY REPLACEMENT

730BA-01

1. REPLACE TRANSMITTER BATTERY

NOTICE:

Special caution should be taken for handling each component as they are precision electronic components.



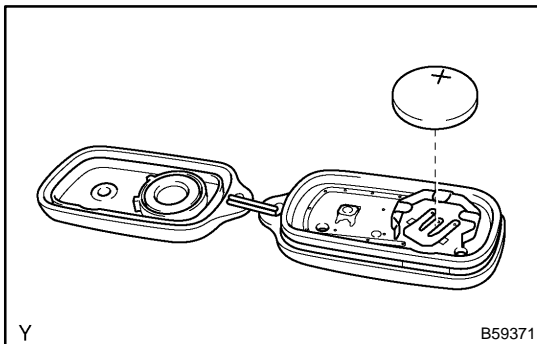
(a) Using a screwdriver, remove the cover.

NOTICE:

Do not pry out the cover forcibly.

HINT:

Tape the screwdriver tip before use.



(b) Remove the battery (lithium battery).

NOTICE:

- **Do not push the terminals with a finger.**
- **If prying up the battery (lithium battery) forcibly to remove, the terminals are deformed.**

(c) Install a battery (lithium battery), as shown in the illustration.

NOTICE:

- **Face the battery upward.**
- **Take care not to deform the terminals.**

(d) Check that the rubber cover is not distorted or slipped off, and install the cover.

NOTICE:

It might cause faulty contact of battery (lithium battery) and terminals.