

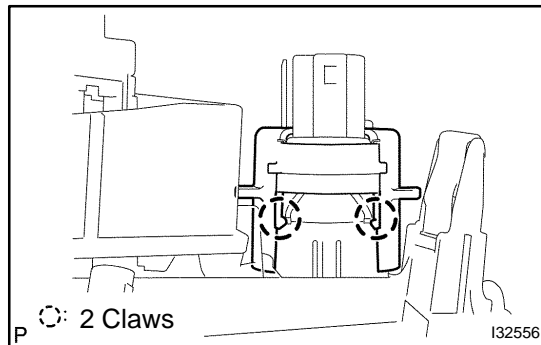
CIGARETTE LIGHTER ASSY REPLACEMENT

670EN-01

HINT:

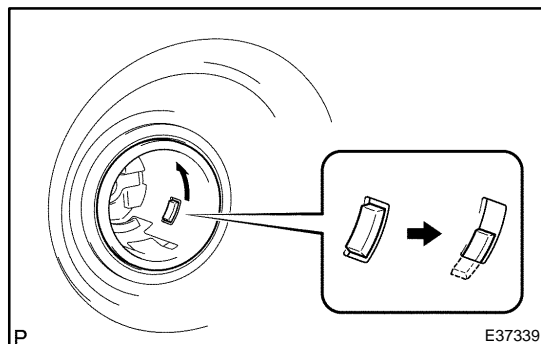
COMPONENTS: See page 67-2

1. REMOVE FLOOR SHIFT SHIFT LEVER KNOB SUB-ASSY (M/T TRANSAXLE)
(See page 71-10)
2. REMOVE INSTRUMENT CLUSTER FINISH PANEL ASSY CTR (See page 71-10)



3. REMOVE CIGARETTE LIGHTER COVER

- (a) Release the 2 fitting claws, remove the cigarette lighter cover.



4. REMOVE CIGARETTE LIGHTER ASSY

- (a) Remove the cigarette lighter knob and element assy.
- (b) Turn the socket in the circumference direction as shown in the illustration, disengage the claw between the socket and the cigarette lighter bezel stay, and push out the socket to the room side.
- (c) Align the socket with the notch on the cigarette lighter bezel stay, remove the cigarette lighter assy to the room side.

5. INSTALL CIGARETTE LIGHTER ASSY

- (a) Align the socket with the notch on the cigarette lighter bezel stay, push the cigarette lighter assy into as hard as possible and install it.
- (b) Install the cigarette lighter knob and element assy.