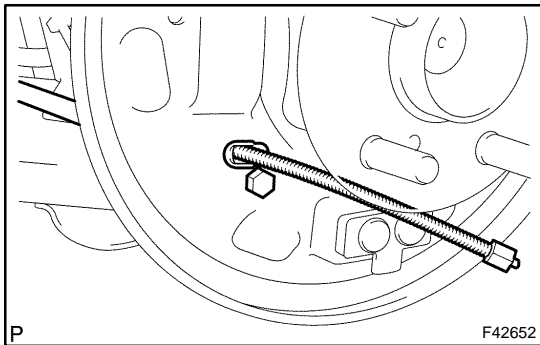


REPLACEMENT

HINT:

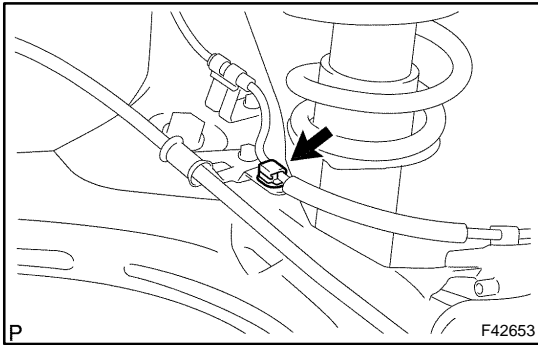
For parking brake cable assy No.2, perform the same procedure to the parking brake cable assy No.3.

1. REMOVE REAR WHEEL
2. REMOVE REAR BRAKE DRUM SUB-ASSY (DRUM REAR BRAKE TYPE) (See page 32-33)
3. REMOVE FRONT BRAKE SHOE (DRUM REAR BRAKE TYPE) (See page 32-33)
SST 09718-00010, 09921-00010
4. REMOVE PARKING BRAKE SHOE STRUT SET LH (DRUM REAR BRAKE TYPE) (See page 32-33)
5. REMOVE REAR BRAKE AUTOMATIC ADJUST LEVER LH (DRUM REAR BRAKE TYPE) (See page 32-33)
6. REMOVE REAR BRAKE SHOE (DRUM REAR BRAKE TYPE) (See page 32-33)
SST 09718-00010
7. DISCONNECT REAR DISC BRAKE CALIPER ASSY LH (DISC REAR BRAKE TYPE) (See page 32-49)
8. REMOVE REAR DISC (DISC REAR BRAKE TYPE) (See page 32-49)
9. REMOVE PARKING BRAKE SHOE STRUT LH (DISC REAR BRAKE TYPE) (See page 33-18)
10. REMOVE PARKING BRAKE SHOE ADJUSTING SCREW SET (DISC REAR BRAKE TYPE) (See page 33-18)
11. REMOVE PARKING BRAKE SHOE ASSY LH NO.1 (DISC REAR BRAKE TYPE) (See page 33-18)
SST 09718-00010
12. REMOVE PARKING BRAKE SHOE ASSY LH NO.2 (DISC REAR BRAKE TYPE) (See page 33-18)
SST 09718-00010
13. REMOVE PARKING BRAKE SHOE LEVER LH (DISC REAR BRAKE TYPE) (See page 33-18)



14. DISCONNECT PARKING BRAKE CABLE ASSY NO.3
 - (a) Remove the bolt, and disconnect the parking brake cable assy No.3 from the backing plate.

15. REMOVE EXHAUST PIPE ASSY FRONT
1ZZ-FE ENGINE TYPE: See page 15-4
2ZZ-GE ENGINE TYPE: See page 15-9
16. REMOVE FRONT FLOOR HEAT INSULATOR NO.1 (See page 33-8)
17. REMOVE FRONT FLOOR HEAT INSULATOR NO.2 (See page 33-8)
18. REMOVE FUEL TANK PROTECTOR NO.1
 - (a) Remove the 5 nuts and fuel tank protector No.1.

**19. REMOVE PARKING BRAKE CABLE ASSY NO.3**

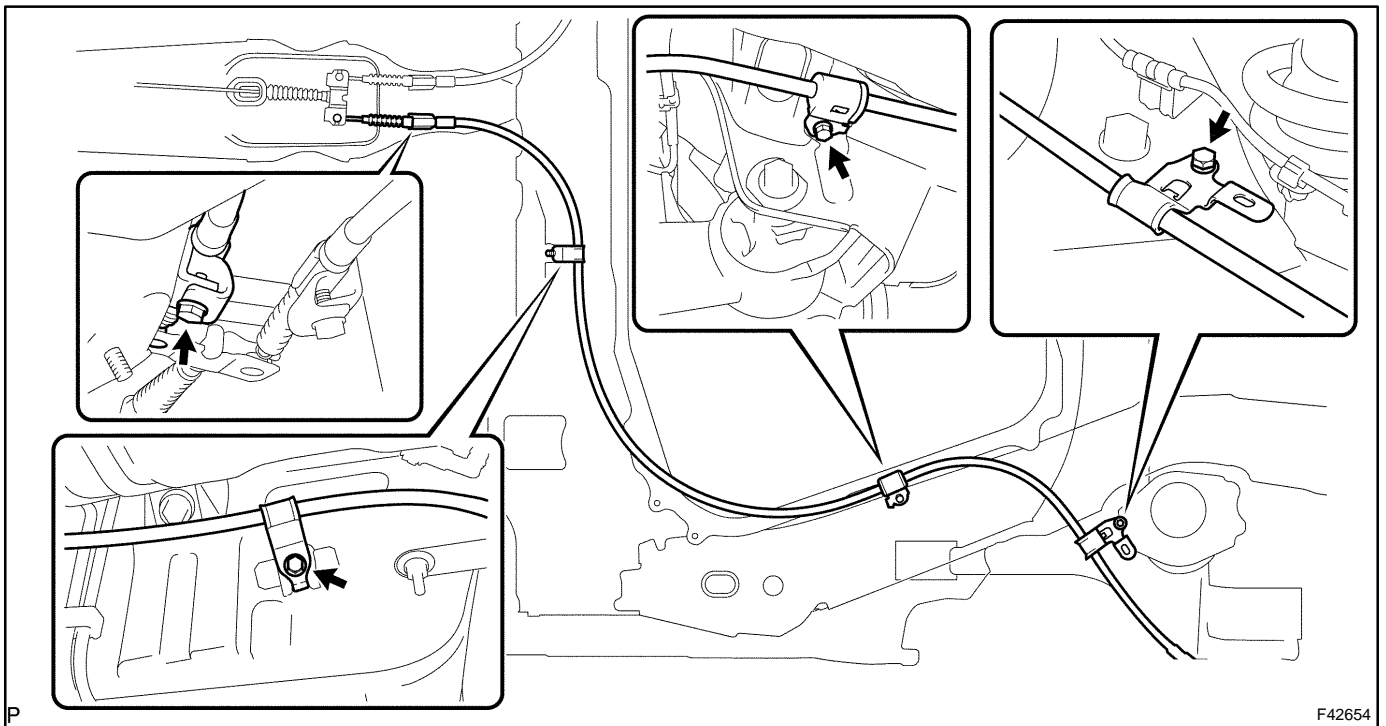
- (a) Using a clip remover, disconnect the skid control sensor wire harness clip from the clamp.
- (b) Remove the 4 bolts and cable retainer from the body.
- (c) Disconnect the parking brake cable assy No.3 from the equalizer, and remove the parking brake cable assy No.3.

20. INSTALL PARKING BRAKE CABLE ASSY NO.3

- (a) Connect the parking brake cable assy No.3 to the equalizer.

- (b) Install the parking brake cable assy No.3 with the 4 bolts and cable retainer.

Torque: 5.4 N·m (55 kgf·cm, 48 in.-lbf)

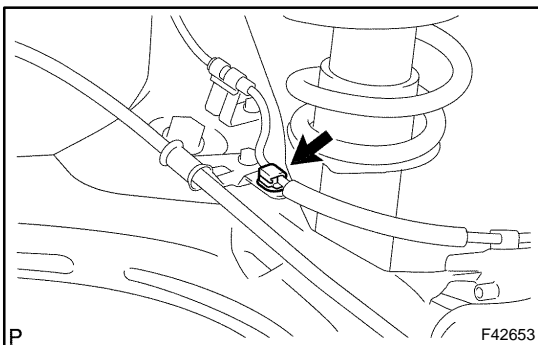


- (c) Connect the skid control sensor wire harness clip to the clamp.

21. INSTALL FUEL TANK PROTECTOR NO.1

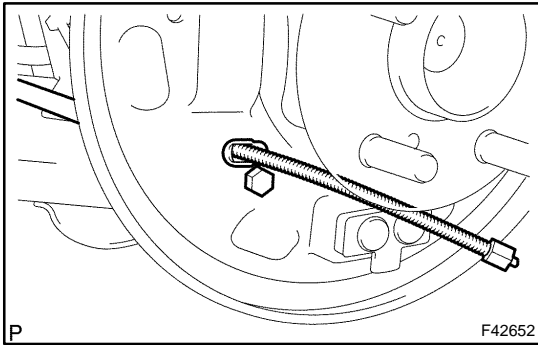
- (a) Install the fuel tank protector No.1 with the 5 nuts.

Torque: 5.5 N·m (55 kgf·cm, 48 in.-lbf)

**22. INSTALL FRONT FLOOR HEAT INSULATOR NO.2 (See page 33-8)****23. INSTALL FRONT FLOOR HEAT INSULATOR NO.1 (See page 33-8)****24. INSTALL EXHAUST PIPE ASSY FRONT**

1ZZ-FE ENGINE TYPE: See page 15-4

2ZZ-GE ENGINE TYPE: See page 15-9



- 25. CONNECT PARKING BRAKE CABLE ASSY NO.3**
 (a) Connect the parking brake cable assy No.3 to the backing plate with the bolt.
Torque: 7.8 N·m (80 kgf·cm, 69 in·lbf)

- 26. APPLICATION HIGH TEMPERATURE GREASE (DRUM REAR BRAKE TYPE) (See page 32-33)**
27. INSTALL REAR BRAKE SHOE (DRUM REAR BRAKE TYPE) (See page 32-33)
 SST 09718-00010
28. INSTALL REAR BRAKE AUTOMATIC ADJUST LEVER LH (DRUM REAR BRAKE TYPE) (See page 32-33)
29. INSTALL PARKING BRAKE SHOE STRUT SET LH (DRUM REAR BRAKE TYPE) (See page 32-33)
30. INSTALL FRONT BRAKE SHOE (DRUM REAR BRAKE TYPE) (See page 32-33)
 SST 09718-00010, 09921-00010
31. CHECK REAR DRUM BRAKE INSTALLATION (DRUM REAR BRAKE TYPE) (See page 32-33)
32. INSTALL REAR BRAKE DRUM SUB-ASSY (DRUM REAR BRAKE TYPE) (See page 32-33)
33. ADJUST REAR DRUM BRAKE SHOE CLEARANCE (DRUM REAR BRAKE TYPE) (See page 32-33)
34. APPLICATION HIGH TEMPERATURE GREASE (DISC REAR BRAKE TYPE) (See page 33-18)
35. INSTALL PARKING BRAKE SHOE LEVER LH (DISC REAR BRAKE TYPE) (See page 33-18)
36. INSTALL PARKING BRAKE SHOE ASSY LH NO.2 (DISC REAR BRAKE TYPE) (See page 33-18)
 SST 09718-00010
37. INSTALL PARKING BRAKE SHOE ASSY LH NO.1 (DISC REAR BRAKE TYPE) (See page 33-18)
 SST 09718-00010
38. INSTALL PARKING BRAKE SHOE ADJUSTING SCREW SET (DISC REAR BRAKE TYPE) (See page 33-18)
39. INSTALL PARKING BRAKE SHOE STRUT LH (DISC REAR BRAKE TYPE) (See page 33-18)
40. CHECK PARKING BRAKE INSTALLATION (DISC REAR BRAKE TYPE) (See page 33-18)
41. INSTALL REAR DISC (DISC REAR BRAKE TYPE) (See page 32-49)
42. ADJUST PARKING BRAKE SHOE CLEARANCE (DISC REAR BRAKE TYPE) (See page 33-18)
43. CONNECT REAR DISC BRAKE CALIPER ASSY LH (DISC REAR BRAKE TYPE) (See page 32-49)
44. INSTALL REAR WHEEL
 Torque: 103 N·m (1,050 kgf·cm, 76 ft·lbf)
45. INSPECT PARKING BRAKE LEVER TRAVEL (See page 33-2)
46. ADJUST PARKING BRAKE LEVER TRAVEL (See page 33-2)
47. CHECK EXHAUST LEAKAGE